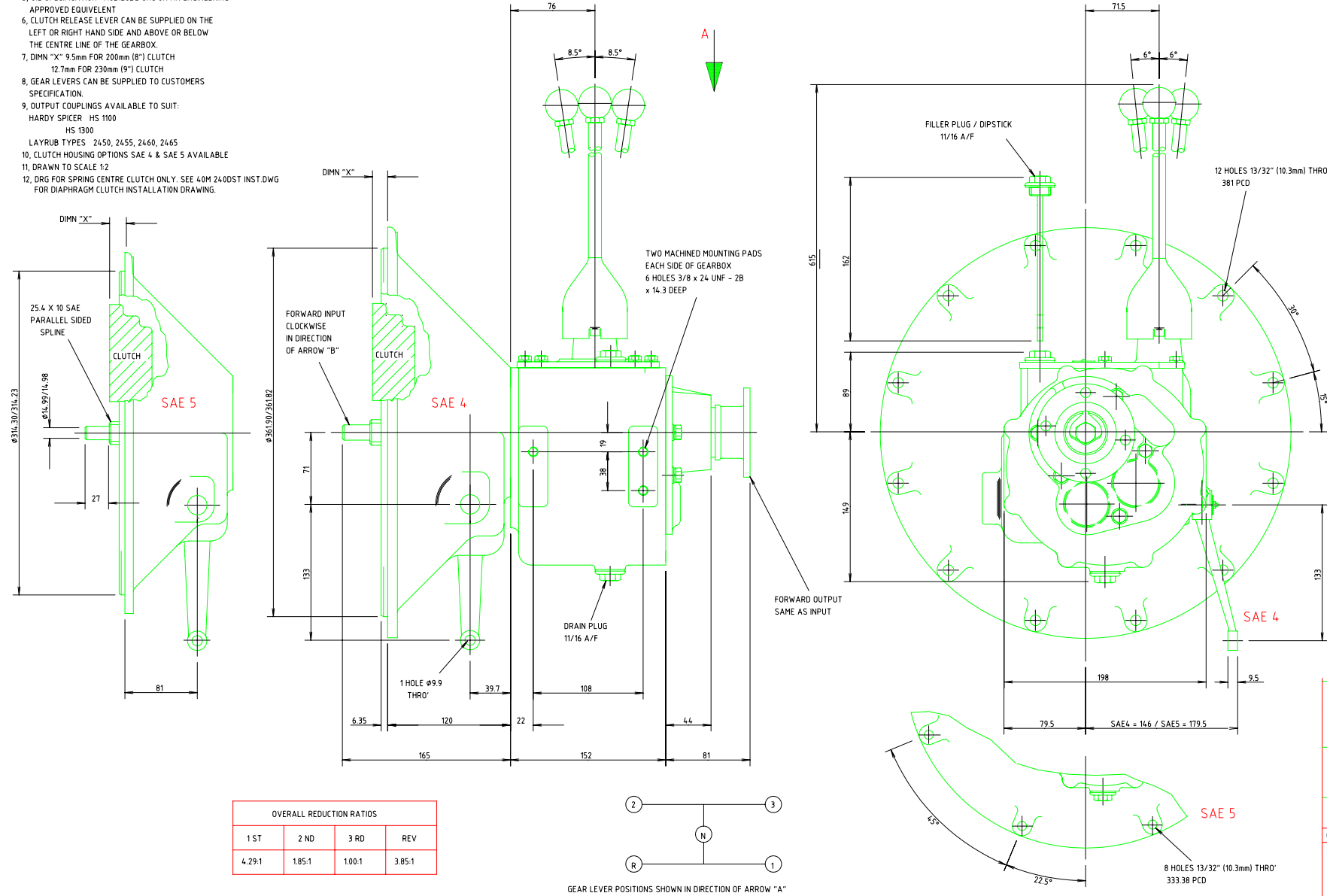
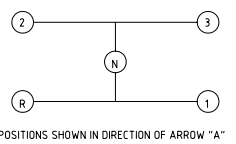


- NOTES;
- 1, MAXIMUM INPUT TORQUE : 81.4 Nm (60 lbf.ft)
 - 2, MAXIMUM INPUT SPEED : 3250 R.P.M.
 - 3, APPROXIMATE WEIGHT : 32.7 Kg (72 lbs)
 - 4, APPROXIMATE OIL CAPACITY : 1.70 Litres (3 Pints)
 - 5, OIL SPECIFICATION : MOBILUBE SHC OR AN ENGINEERING APPROVED EQUIVALENT
 - 6, CLUTCH RELEASE LEVER CAN BE SUPPLIED ON THE LEFT OR RIGHT HAND SIDE AND ABOVE OR BELOW THE CENTRE LINE OF THE GEARBOX.
 - 7, DIMN "X" 9.5mm FOR 200mm (8") CLUTCH
12.7mm FOR 230mm (9") CLUTCH
 - 8, GEAR LEVERS CAN BE SUPPLIED TO CUSTOMERS SPECIFICATION.
 - 9, OUTPUT COUPLINGS AVAILABLE TO SUIT:
HARDY SPICER HS 1100
HS 1300
LAYRUB TYPES 2450, 2455, 2460, 2465
 - 10, CLUTCH HOUSING OPTIONS SAE 4 & SAE 5 AVAILABLE
 - 11, DRAWN TO SCALE 1:2
 - 12, DRG FOR SPRING CENTRE CLUTCH ONLY. SEE 40M 2400ST INST.DWG FOR DIAPHRAGM CLUTCH INSTALLATION DRAWING.



OVERALL REDUCTION RATIOS			
1 ST	2 ND	3 RD	REV
4.29:1	1.85:1	1.00:1	3.85:1



8 NOTE 12 ADDED TO INFORM DRG IS FOR SPRING CENTRE CLUTCH. G'BOX MTG HOLES CORRECTED TO 13/32" THRU' WAS 3/8" THRU. OP LEVER DISTANCE FROM REAR OF CLUTCH HSG CORRECTED TO 39.7 WAS 34. SAE5 HSG SPIGOT DIA CORRECTED TO 314.30/314.23 WAS 361.90/361.82. SAE4 = 146 / SAE5 = 179.5 WAS 146

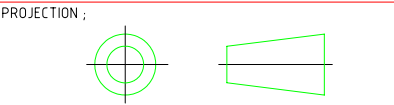
7 ED MOD No: 11962 16/12/03 CLUTCH DIMN "X" ADDED SAE 5 VIEW DRAWN NOTES UPDATED AND INFOMATION LAYOUT REIVED NOTE: THIS INSTALLATION DRAWING COVERS 40M2K181 ISSUE 1 (SEPARATE DRG AVAILABLE) 09-06-93 M.D.R

ISSUE No	MODIFICATION		
CAD FILE No.	H:\GEARBOXES\40M\40M2 INST.DWG		
MATERIAL			
HEAT TREATMENT			

THE INFORMATION CONTAINED ON THIS DRAWING MUST NOT BE COPIED OR LENT WITHOUT PERMISSION. COPYRIGHT (c) 1998 NEWAGE TRANSMISSIONS LIMITED.

UNLESS OTHERWISE STATED;
1, ALL DIMENSIONS ARE IN mm.
2, TOLERANCES : WHOLE DIMn ± 1 mm
DECIMAL DIMn ± 0.25 mm - ANGULAR DIMn $\pm 0.5^\circ$
3, SURFACE FINISH 6.3 micron C.L.A.

DO NOT SCALE IF IN DOUBT ASK



SCALE 1:2
SHEET SIZE A1

DRAWN	NAME	SIGNED	DATE
APPROVED	M HARRIS		04/01/99