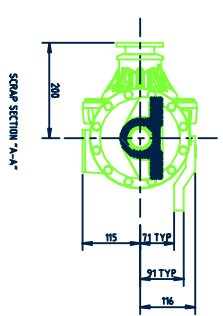
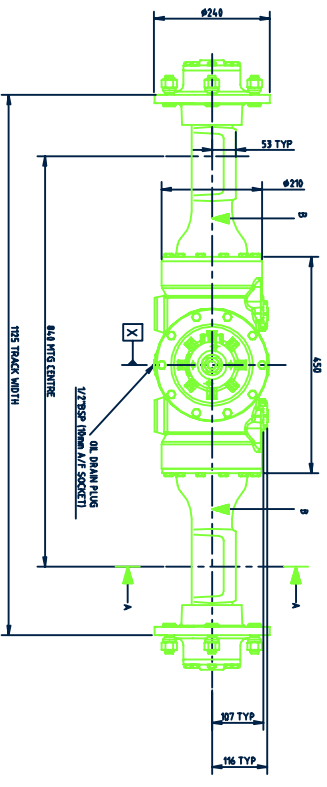
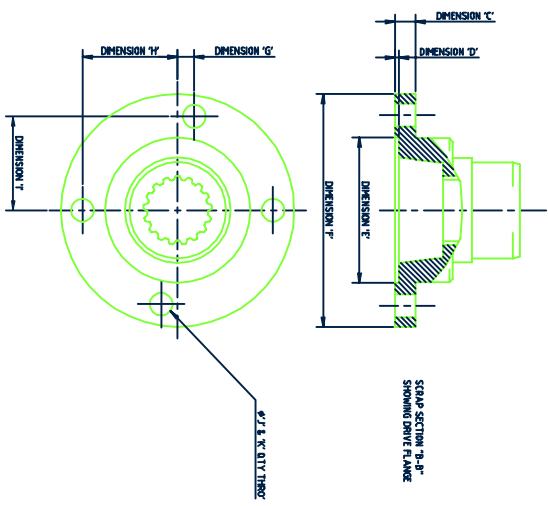
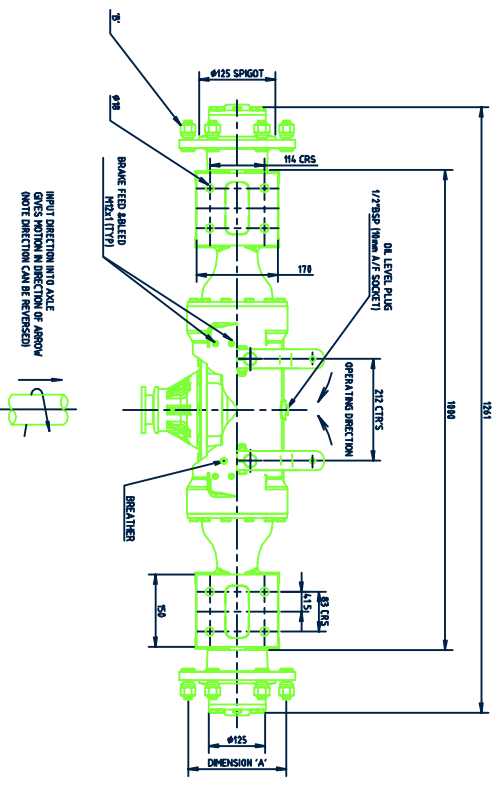


PART No 215PBINST (1125)



QTY	WT	CR	MT	ST	CR	WT	CR	MT	ST	CR	WT	CR	MT	ST
205	6.07	2.1	0.08	0.19	1.8	1.3	57.5	0.73	4.05	34.59	34.44	10.2	4	
205	6.27	0.87	0.08	0.19	1.8	-2.1	47.8	0.6	0	37.25	37.25	8.28	4	
165.1	5.64	0.87	0.08	0.19	1.8	2.3	57.0	10.8	21.0	42.0	34.44	8.28	4	
7.0	-2.1	57.0	10.8	21.0	42.0	-2.1	57.0	10.8	21.0	42.0	34.44	8.28	4	
8.5	2.6	47.8	0.6	0	37.25	37.25	8.28	4						
8.5	1.5	46.4	0.7	0	40.8	39.76	39.49	9.44	4					
8.5	1.5	78.0	16.8	8.27	47.65	44.93	17.55	4						
8.5	2.0	46.4	0.7	0	40.8	39.76	39.49	9.24	4					
4.5	1.5	78.0	16.8	8.27	47.65	44.93	17.24	4						

UNLESS OTHERWISE STATED:  
 1. ALL DIMENSIONS ARE IN mm  
 2. TOLERANCES: WHOLE DIMS ±0.25mm  
 DECIMAL DIMS ±0.25mm. ANGULAR DIMS ±0.5°  
 3. SURFACE FINISH 3.2 micron C1 A

PROTECTION:

SCALE: 1:5

SHEET SIZE: A1

THE INFORMATION CONTAINED ON THIS DRAWING MUST NOT BE COPIED OR LENT WITHOUT PERMISSION. COPYRIGHT (c) 1998 NEWAGE TRANSMISSIONS LIMITED

**NEWAGE TRANSMISSIONS LIMITED**

BARROW ROAD, CROFTBY, DUNDEE, CF7 2AA. TEL: 01382 679111 Email: [enquiry@newage-tp.com](mailto:enquiry@newage-tp.com)

DO NOT SCALE IF IN DOUBT ASK

215PB AXLE INSTALLATION (1125 TRACK WIDTH)

HEAT TREATMENT

PART No 215PB INST (1125)

ISSUE 1

ISSUE	MODIFICATION
1	ALPHA ISSUE DRAWING PASSED TO PRODUCTION ISSUE
2	BY TERAAC SUPER TRANSMISSIONS S REPLACES MODEL 422
3	HTG: 06/29/98 MOD No: P79311
4	HTG: 06/29/98 MOD No: P79311
5	HTG: 06/29/98 MOD No: P79311
6	HTG: 06/29/98 MOD No: P79311
7	HTG: 06/29/98 MOD No: P79311
8	HTG: 06/29/98 MOD No: P79311
9	HTG: 06/29/98 MOD No: P79311
10	HTG: 06/29/98 MOD No: P79311
11	HTG: 06/29/98 MOD No: P79311