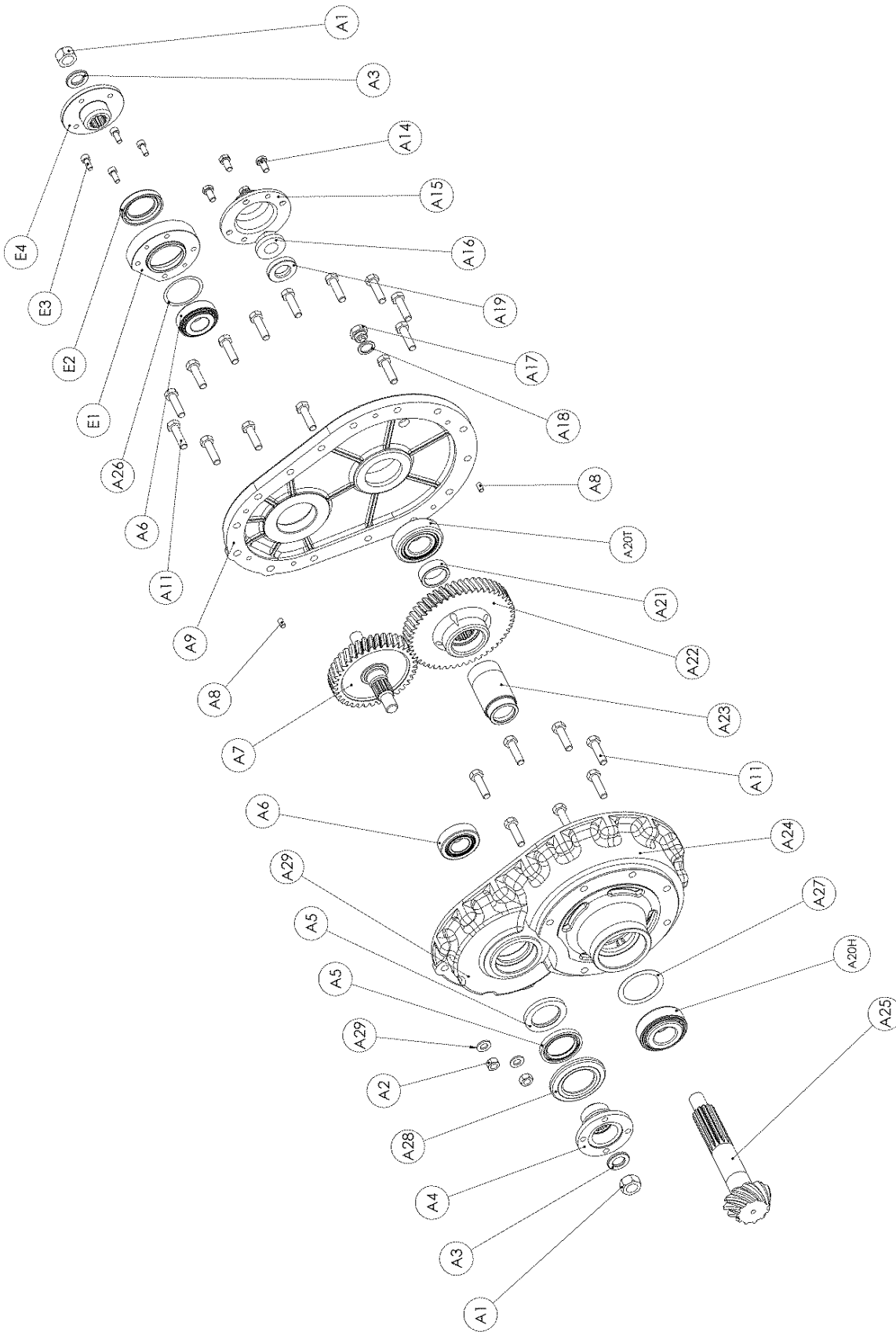


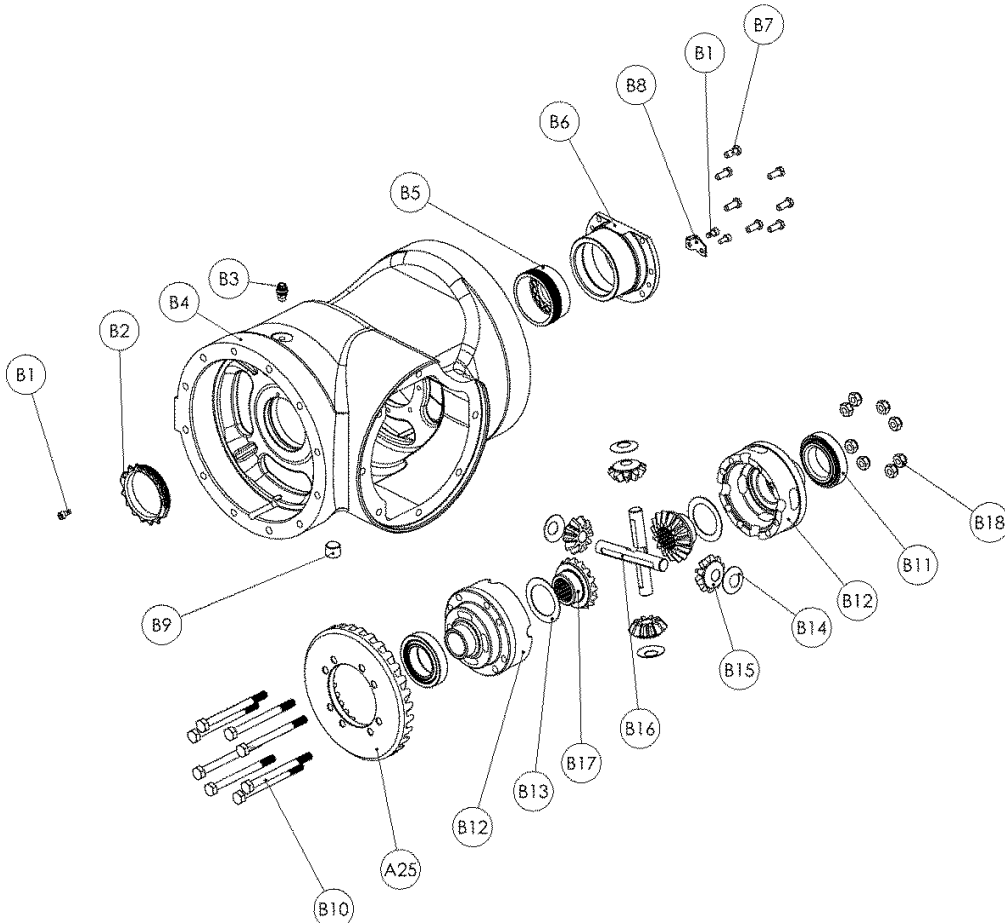
### Section 'A' – Transfer Case Assembly

| Item | Part No                               | Qty      | Description                         |
|------|---------------------------------------|----------|-------------------------------------|
| A1   | 007-0130                              | 1        | M20 Nut                             |
| A3   | 512-2191                              | 1        | Coupling Washer                     |
| A4   | 512-2180                              | 1        | HS1310 Input Coupling               |
| A5   | 002-0030V                             | 3        | Coupling Seal                       |
| A6   | 055C020U043H                          | 2        | Taper Roller Bearing                |
| A7   | 512-2352                              | 1        | 0.91:1 Input Pinion 512B14C212 ONLY |
|      | 512-2331                              |          | 1:1 Input Pinion 512B16C212 ONLY    |
|      | 512-2351                              |          | 1.26:1 Input Pinion 512B20C212 ONLY |
| A8   | 0210815                               | 2        | Dowel                               |
| A9   | 512-2312                              | 1        | Transfer Case Rear                  |
| A11  | 0041212P                              | 20       | M12 x 45mm Bolt                     |
| A14  | 0041007P                              | 4        | M10 x 20mm Bolt                     |
| A15  | 512-2360                              | 1        | Lower End Cover                     |
| A16  | 512-2200                              | 1        | M24 Flange Nut                      |
| A17  | CP1331                                | 1        | Level/Filler Plug                   |
| A18  | 0201714                               | 1        | Dowty Washer                        |
| A19  | 512-2190                              | 1        | Pinion washer                       |
| A20T | 055CU024T ( <i>small int radius</i> ) | 1        | Rear Pinion Taper Roller Bearing    |
| A20H | 055CU024H ( <i>large int radius</i> ) | 1        | Front Pinion Taper Roller Bearing   |
| A21  | 512-2891/Q1                           | 1        | Solid Spacer Shim                   |
| A22  | 512-2342                              | 1        | 0.91:1 Input Wheel 512B14C212 ONLY  |
|      | 512-2320                              |          | 1:1 Input Wheel 512B16C212 ONLY     |
|      | 512-2340                              |          | 1.26:1 Input Wheel 512B20C212 ONLY  |
| A23  | 512-2890                              | 1        | Pinion Spacer                       |
| A24  | 512-2302                              | 1        | Transfer Case Front                 |
| A25  | 513-9820                              | 1        | Crown Wheel & Pinion                |
| A26  | 360-2350                              | As       | Shim 0.25 mm (0.010")               |
|      | 360-2290                              | Required | Shim 0.40mm (0.016")                |
|      | 360-2210                              |          | Shim 0.30 mm (0.012")               |
| A27  | 057313A                               | As       | Shim 0.05 mm (0.002")               |
|      | 057313B                               | Required | Shim 0.08mm (0.003")                |
|      | 057313C                               |          | Shim 0.25 mm (0.010")               |
| A28  | 250-0910                              | 1        | Oil Seal Cover                      |



### Section 'B' – Main Case and Differential Assembly

| Item | Part No      | Qty | Description                 |
|------|--------------|-----|-----------------------------|
| B1   | 0081312P     | 3   | M6 x 12mm Cap Bolt          |
| B2   | 512-2151     | 1   | Bearing Adjuster Nut        |
| B3   | CP1488       | 1   | Breather                    |
| B4   | 512-0010     | 1   | Main Case                   |
| B5   | 512-2150     | 1   | Bearing Adjuster Nut        |
| B6   | 512-0730     | 1   | Bearing Housing             |
| B7   | 0040807P     | 7   | M8 x 20mm Bolt              |
| B8   | 616-2160     | 1   | Bearing Adjuster Lock Plate |
| B9   | 0150250      | 1   | ½" BSP Drain Plug           |
| B10  | 0041024HT    | 8   | M10 x 120mm Bolt            |
| B11  | 055C028U049H | 2   | Taper Roller Bearing        |
| B12  | 615-9521     | 1   | Differential Case           |
| B13  | 400-2110     | 2   | Diff Wheel Thrust Washer    |
| B14  | 400-2120     | 4   | Diff Pinion Thrust Washer   |
| B15  | 410-2100     | 4   | Diff Pinion                 |
| B16  | 413-2130     | 2   | Diff Spider                 |
| B17  | 410-2090     | 2   | Diff Wheel                  |
| B18  | 0051006HT    | 8   | M10 Nut                     |
| B19  | CP1224       | 1   | Sealing Washer              |



### Section 'C' – Planet Carrier Assembly

| Item | Part No              | Qty | Description                             |
|------|----------------------|-----|---|
| C1   | 400-0250             | 3   | Planet Pin                              |
| C2   | 400-0270             | 6   | Thrust Washer                           |
| C3   | 0562005              | 3   | Needle Roller Bearing                   |
| C4   | 400-0080             | 3   | Planet Gear                             |
| C5   | 512-0060             | 1   | Planet Carrier                          |
| C6   | 010-0030             | 3   | Spring Pin                              |
| C7   | 400-1320             | 1   | Spacer                                  |
| C8   | 003-0120             | 1   | Circlip                                 |
| C9   | 512-0091<br>512-0093 | 1   | Short Arm Sun Gear<br>Long Arm Sun Gear |
| C10  | 512-0070             | 1   | Annulus                                 |
| C11  | 0211250              | 1   | Dowel                                   |

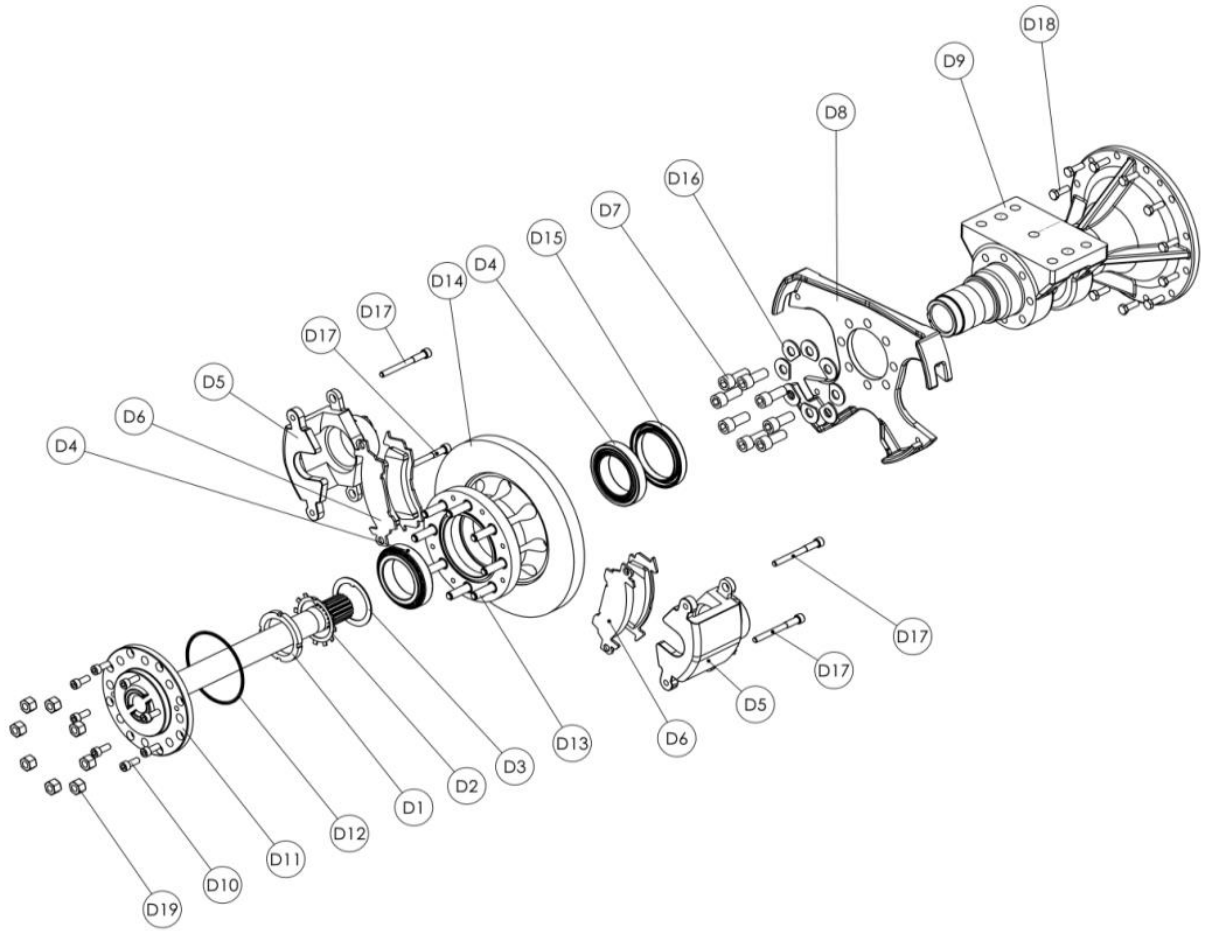
**NOTE: Quantities stated per side (2 Assemblies per Axle)**



### Section 'D' – Axle Arm, Hub and Brake Assemblies

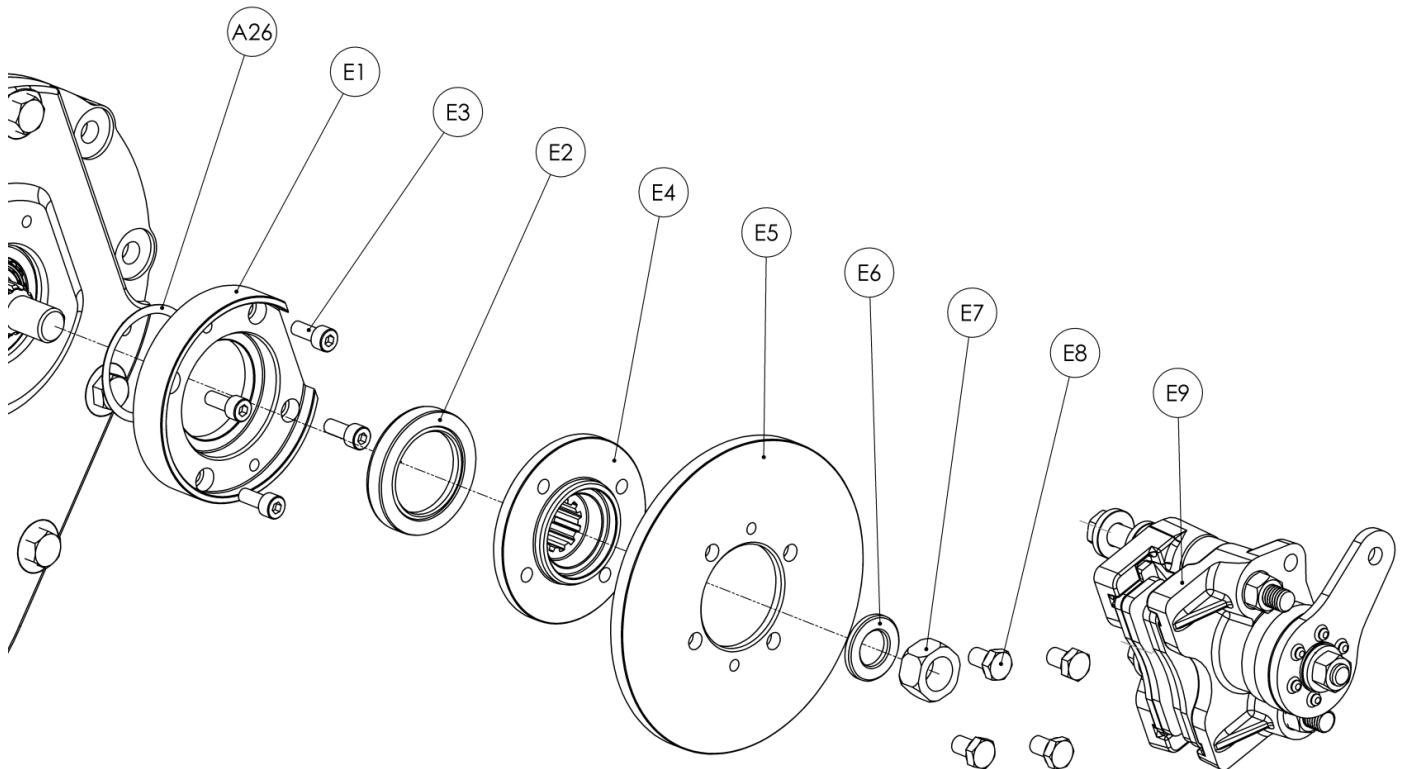
| Item | Part No  | Qty | Description  |
|------|--|-----|--|
| D1   | 007-0260   | 1   | M70 Lock Nut   |
| D2   | 009-0230   | 1   | Locking Washer   |
| D3   | 435-1440   | 1   | Thrust Washer  |
| D4   | 0540751H   | 2   | Taper Roller Bearing   |
| D5   | 512-2500   | 2   | Brake Caliper (includes D6 & D17)  |
| D6   | 512-2510   | 4   | Brake Pad  |
|      | order 512-2510-KIT (8 Brake Pads) and replace all pads on the axle at the same time.       |     |  |
| D7   | 0081740P   | 8   | M16 x 40mm Cap Bolt  |
| D8   | 512-2400   | 1   | Caliper Carrier  |
| D9   | 512-0024<br>512-0025<br>513-0024 (Batch W15455 Onwards)<br>513-0025 (Batch W15455 Onwards) | 1   | Long Axle Arm (Common Pad)<br>Short Axle Arm (Common Pad)<br>Long Axle Arm (Common Pad)<br>Short Axle Arm (Common Pad) |
| D10  | 0081525P   | 8   | M10 x 25mm Cap Bolt  |
| D11  | 512-0102<br>512-0103   | 1   | Short Axle Shaft<br>Long Axle Shaft  |
| D12  | 0431303V   | 1   | O Ring   |
| D13  | 512-0452   | 8   | 9/16 UNF x 18 Wheel Stud   |
| D14  | 512-0040<br>515-0040 (Batch W15455 Onwards)  | 1   | Wheel Hub / Brake Disc   |
| D15  | 417-2850<br>613-2850 (Batch W15455 Onwards)  | 1   | Hub Seal   |
| D16  | 512-2192   | 8   | Caliper Carrier Washer   |
| D17  | See D5   | 4   | Caliper Mounting Bolt  |
| D18  | 0041210HTP   | 12  | M12 x 35mm Bolt  |
| D19  | 007-0400   | 8   | 9/16 UNF x 18 Wheel Nut  |

**NOTE: Quantities stated per side (2 Assemblies per Axle)**



### Section 'E' – Park Brake Ready Assembly

| Item | Part No                          | Qty            | Description  |
|------|----------------------------------|----------------|--|
| E1   | 512-2372                         | 1              | Seal Housing   |
| E2   | 0400483V                         | 1              | Oil Seal   |
| E3   | 0081420P                         | 4              | M8 x 20mm Cap Screw  |
| E4   | 512-2181                         | 1              | Park Brake Flange  |
| E6   | 512-2191                         | 1              | Flange Washer  |
| E7   | 007-0130                         | 1              | M20 Nut  |
| A26  | 360-2350<br>360-2290<br>360-2210 | As<br>Required | Shim 0.25 mm (0.010")<br>Shim 0.40mm (0.016")<br>Shim 0.30 mm (0.012") |



**\* NOTE: PARK BRAKE READY AXLES DO NOT REQUIRE PARTS E5, E8 AND E9**